





# Contents

<b>1.0 Executive Summary</b> .....	<b>2</b>
<b>2.0 Report of the University of Alberta Museums Policy and Planning Committee</b> .....	<b>3</b>
2.1 Activity One.....	3
2.2 Activity Two.....	4
2.3 Activity Three.....	4
2.4 Activity Four.....	7
2.5 Activity Five.....	7
<b>Appendices</b> .....	<b>9</b>
Appendix A.....	9
Appendix B.....	10
Appendix C.....	12
Appendix D.....	13
Appendix E.....	14

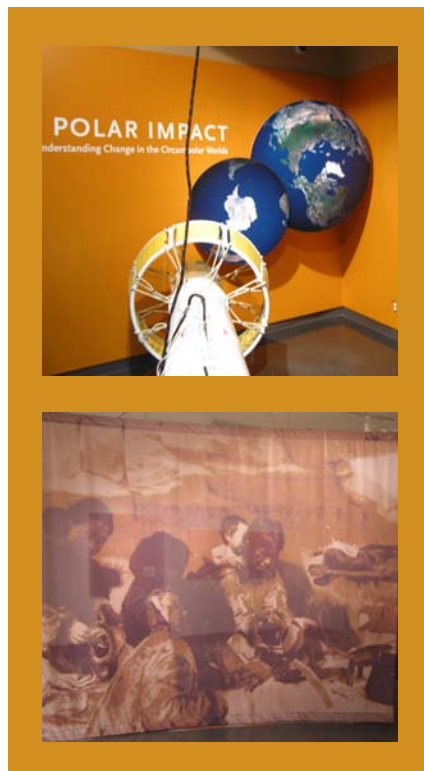
# University of Alberta Museums Annual Report

July 1, 2010 to June 30, 2011

## 1.0 Executive Summary

This report summarizes the activities of the Policy and Planning Committee, with selected collections-based highlights and achievements from July 1, 2010 to June 30, 2011.

- Collections are now completing Acquisition Strategies to address the next steps of compliance with the University of Alberta Museums and Collections Policy (approved by the Board of Governors on March 28, 2008);
- The Policy and Planning Committee approved the deaccession of three specimens from the Meteorite Collection;
- The committee adjudicated student applications for the summer Internship in Museum Innovation which were up 25% over the previous year. The committee recommended that in future years, applications be restricted to undergraduate students only;
- A new campus-wide Art Acquisition and Commissioning Procedure was approved through all levels of governance with final approval from the Board of Governors on May 13, 2011;
- The Policy and Planning Committee provided input to the staff of Museums and Collections Services on the development of a business case for exhibition space in Enterprise Square (in the space formerly occupied by the Art Gallery of Alberta);
- Through the committee's annual review of funding needs requests, it is apparent that collections still struggle to obtain funding for basic collections-related maintenance, including collections management, staffing, storage cabinets, and capital renovations; and
- The Policy and Planning Committee continues to advocate for critical collections-related facility issues on campus.



## A Polar Impact: Northern Initiatives and Ties to the U of A Museums

*Polar Impact: Understanding Change in the Circumpolar Worlds* was featured in the University of Alberta Museums' Gallery A (TELUS Centre) from October 7 to November 20, 2010. This collaborative exhibition by the U of A Museums and the U of A's Canadian Circumpolar Institute (CCI) highlighted a selection of circumpolar research to celebrate the 50th anniversary of CCI.

Over the past 50 years, the Canadian Circumpolar Institute has reinforced

the work of northerners and polar researchers. Many artifacts and specimens collected through their research have become part of the University of Alberta Museums' collections. This continuously growing body of information has shaped, and continues to shape, our understanding of the Polar Regions.

This interdisciplinary exhibition was complemented by a well-attended speaker's series featuring U of A researchers and museum curators.

## 2.0 Report of the University of Alberta Museums Policy and Planning Committee

The University of Alberta Museums Policy and Planning Committee met formally on October 26, 2010, December 7, 2010, March 4, 2011, and June 7, 2011. Several issues identified in the last report are ongoing to this academic year.

### 2.1 Activity One

#### University of Alberta Museums and Collections Policy (ongoing activity)

In order for a collection to be registered under the University of Alberta Museums and Collections Policy, it must comply with basic museum standards of practice. Below is a summary of the steps taken in this regard in the 2010-2011 academic year:

- The Policy and Planning committee approved a template and pilot process for the development of Acquisitions Strategies by all collections. These strategies outline the purpose of the collection and why it collects and maintains particular objects;

- Staff of Museums and Collections Services are now working with curators to develop Acquisition Strategies. It is anticipated that this process will be complete for all collections by the end of the 2011 calendar year;
- The Policy and Planning Committee approved in principle “Guidelines for Undocumented Museum Objects”; the committee also recommended that the guidelines be piloted with the review of the Dentistry Museum Collection. This document addresses unaccessioned objects located in a collection for which there is no way to establish a legal title;
- The campus-wide “Art Acquisition and Commissioning Procedure” was approved by the Board of Governors on May 13, 2011 and is now available online at UAPPOL; and
- A training program to address key issues/processes related to policy implementation is being developed with the first two workshops to be delivered in late fall 2011 and early spring 2012.

## 2.2 Activity Two

### Curatorial Research Facility (Ongoing activity)

The University of Alberta Museums’ Policy and Planning Committee continues to advocate for a Curatorial Research Facility (CRF) as the need for improved museum facilities on campus grows. The committee, encouraged that the CRF is included in the Comprehensive Institutional Plan, awaits further direction from university administration.

## 2.3 Activity Three

### Review of Category A Designation (ongoing activity)

The University of Alberta Museums’ Category A Designation conferred by the Department of Canadian Heritage has been under review since 2004/05; the designation will remain conditional until the University of Alberta Museums meet all facility requirements.

### Part A: Facilities

Quarterly meetings with the Office of the University Architect have been reinstated to ensure that timely discussions and decisions can take place related to collections spaces and facilities.

## Part B: Emergency Preparedness Planning

- Representatives of the University of Alberta Museums are a part of campus tabletop discussions related to Emergency Preparedness Planning, led by the Emergency Management Office. Also in attendance are Facilities and Operations, Risk Management, Environmental Health and Safety Office, and Campus Protective Services.
- The University of Alberta Museums hired a full-time Preventive Conservation Manager in March 2011. One of the first priorities for this position is addressing the emergency management needs of museum collections on campus.

## Commemorating Curators' Contributions to Collections

Long-serving curators who have made exceptional contributions to the University of Alberta Museums now have an appropriate way to be memorialized. This new "hall of fame" is an addition to the annual University of Alberta Museums Celebration where outstanding volunteers are routinely recognized. Four deserving recipients were chosen in March, 2011 for induction in this inaugural year:

- Husband-and-wife research team Professors Emeriti Ruth Gruhn and the late Alan Bryan, for their work in the Department of Anthropology with the Bryan/Gruhn Archaeology and Bryan/Gruhn Ethnographic Collections (recently renamed after their founders);
- Professor Emeritus Ronald Burwash, for his work with the Petrology Collection in the Department of Earth and Atmospheric Sciences;
- Professor Anne Lambert, founder of the Clothing and Textiles Collection, in the Department of Human Ecology; and
- Professor Emeritus Mark Wilson, from the Department of Biological Sciences, for his work with the Laboratory for Vertebrate Paleontology, as well as his ongoing advocacy for the University of Alberta Museums.

### PHOTOS

1: Professor Emerita Ruth Gruhn with (L-R), Heather Proctor, Chair of the Policy and Planning Committee, Janine Andrews, Executive Director, University of Alberta Museums, and Chancellor Linda Hughes | 2: Professor Emeritus Ronald Burwash | 3: Professor Anne Lambert | 4: Professor Emeritus Mark Wilson



# U of A Museums 2011 Highlights: People, Projects, Research, and Collections

- *Packing Dolls*, an exhibition by the Clothing and Textiles Collection co-curated by student intern in Museum Innovation Christina Williamson and Curator Anne Bissonnette, received a commendation of excellence in June 2011 from the Costume Society of America.
- The University of Alberta Art Collection collaborated with the Prince Takamado Japan Foundation to present *Transcendence: Four Artists, Four Cultures* in early 2011. This exhibition featured the work of four internationally renowned print artists. Noted by Curator Jim Corrigan, these printmakers (from Belgium, Canada, Japan, and Poland), all whom have a history with the University of Alberta, are some of the top print artists in the world today.
- It was announced in the spring of 2011 that a new \$26.4 million museum facility near Grande Prairie will be called the *Philip J. Currie Dinosaur Museum*, named after the University of Alberta's renowned Curator of Dinosaurs. The museum is slated to open in 2013. Currie also received the Alberta Order of Excellence in the fall of 2010 and was in the news often in spring 2011 for his discovery that *Tyrannosaurus Rex*, a species normally thought of as a loner, actually hunted in "gangs." This discovery will be the subject of the forthcoming documentary *Dino Gangs* set for release in 2011.
- Dorothy Fabijan, Assistant Curator of the Vascular Plant Herbarium, was the recipient of the 2011 Nat Rutter Outstanding Technician Award from the U of A chapter of Sigma Xi, the scientific research society.
- Murray Gingras, Curator of the Trace Fossil Collection, led a University of Alberta research team that discovered that billions of years before life evolved in the oceans, thin layers of microbial matter in shallow water produced enough oxygen to support tiny, mobile life forms.
- Chris Herd, Curator of the Meteorite Collection, completed a one-year sabbatical at the Smithsonian National Museum of Natural History in Washington, D.C., where he worked on Martian meteorites in the U.S. National Meteorite Collection.
- Robert Losey, Curator of the Zooarchaeology Reference Collection, was the lead author of a study which examined the burial remains of a dog that lived more than 7000 years ago in Siberia, suggesting that the animal likely lived and died in a parallel fashion to its human contemporaries, eating the same food, sustaining work injuries, and receiving similar mortuary rites.
- Stephanie Nemcsok, Museum Education Coordinator, and Frannie Blondheim, Associate Director, both from Museums and Collections Services, presented The Muse Project as part of a panel discussion on school programs in museums at the Canadian Museums Association Annual Conference in London, Ontario in the spring of 2011. The Muse Project is a curriculum-linked, educational outreach program for grades 4-9 that engages students in object-based research with University of Alberta Museums collections. Attendance in 2010-2011 more than doubled over 2009-2010, and it is anticipated to grow substantially once again in 2011-2012 within the limits of having only one museum education coordinator.
- Heather Proctor, Curator of the Freshwater Invertebrate Collection, was reinstated for another five years as the North American Benthological Society's expert in mites for their Taxonomic Certification Program.
- Richard Palmer, Curator of the Jim van Es Collection for Marine Invertebrates and Malacology, won the 2010 J. Gordin Kaplan Award for Excellence in Research for his work as an internationally-acclaimed evolutionary biologist.





- A risk survey was distributed in June to all collections in order to collect information on high impact, low-incidence risks (emergencies) as well as low-impact, high incidence risks (to be mitigated through preventive conservation practices). The result is a cross-collections snapshot look at comparative risks – a useful tool to determine where planning priorities should lie. This information will also assist with the preparation of a campus-wide museum emergency plan as well as a preventive conservation framework.

## 2.4 Activity Four

### NextGen: Canada (continued activity)

The University of Alberta Museums collaborated with the Alberta Museums Association and the Getty Leadership Institute at the Claremont Graduate University in California (GLI@CGU) to present *NextGen: Canada*, based on the GLI@CGU's internationally respected *Museum Leaders: The Next Generation* program. The inaugural Canadian program, with participants from across the country, was held on the University of Alberta Campus from May 9-13, 2011.

A full program evaluation is scheduled for completion July 31, 2011 to determine future involvement by the U of A Museums.

## 2.5 Activity Five

### Funding Needs Adjudication (annual activity)

#### Adjudication of 2010-2011 Requests:

One of the annual activities of the Policy and Planning Committee is the adjudication of funding requests solicited from the various University of Alberta museum collections.

Several major issues continue to arise out of this annual activity:

- Funding requests continue to be related to basic collections care, however, this is not the intended purpose for the funds administered by Museums and Collections Services; and
- Needs always exceed available funding sources both on and off campus.

- Although \$88,082 was requested in 2010-2011, only \$44,679\* was distributed based on available monies. Requests were assessed according to approved adjudication guidelines and recommended for funding through the following limited and/or competitive sources:
  1. Community Outreach Endowment Fund: a U of A Museums fund which generated approximately \$9000 in 2010-2011;
  2. The Friends of the University of Alberta Museums who raise and donate funds for projects, totaling \$23,308 in 2010-2011; and
  3. Museum and heritage grant and temporary employment programs including Young Canada Works in Heritage Organizations, the Alberta Museums Association, and the Alberta Foundation for the Arts totaling approximately \$63,000 in 2010-2011

In addition to funding coordinated via Museums and Collections Services, designated academic curators and collections staff are actively involved in research\*\*, much of which relates to museum collections.

---

\* See Appendix E, Section Two for detailed funding information. This chart is generated by the Research Services Office. More than \$890,000 in grants was awarded to these researchers between April 1, 2010 and March 31, 2011.

\*\* See Appendix E, Section One for detailed funding information.

# Appendices

## Appendix A

### Policy and Planning Committee Membership

#### Chair

Heather Proctor  
*Curator, Freshwater Invertebrates Collection*  
Department of Biological Sciences  
and *Chair, Curators Committee*

#### Ex Officio (voting)

Janine Andrews  
*Executive Director, Museums and Collections Services*

Tom Kieren  
*President, Friends of the University of Alberta Museums*

#### General Faculties Council (elected)

William Anselmi  
*Department of Modern Languages and Cultural Studies*

Anne Malena  
*Department of Modern Languages and Cultural Studies*

#### Curators' Committee (elected)

Anne Bissonnette  
*Curator, Clothing and Textiles Collection*  
Department of Human Ecology

Jocelyn Hall  
*Curator, Vascular Plant Herbarium*  
Department of Biological Sciences

Pamela Mayne Correia  
*Curator, Bryan/Gruhn Ethnographic Collection, Fossil Hominid  
Cast Collection, Osteology Collection*  
Department of Anthropology

Alison Murray  
*Curator, Museum of Zoology (Ichthyology Collection)  
and Laboratory for Vertebrate Paleontology (Fossil Fishes)*  
Department of Biological Sciences

#### Undergraduate Student Representative

Julia Grochowksi  
Department of Biological Sciences

#### Graduate Students' Association Representative (elected)

Sarah Shewchuk  
Department of Comparative Literature

#### Recording Secretary (non-voting)

Frannie Blondheim  
*Associate Director, Museums and Collections Services*

#### Committee Support (non-voting)

Helen Chimirri-Russell  
*Museums Policy Advisor, Museums and Collections Services*

## Appendix B

### Directory of Registered Collections of the University of Alberta Museums

#### Faculty of Arts

##### Department of Anthropology

Bryan/Gruhn Archaeology Collection

*Curator: Pamela Willoughby*

Bryan/Gruhn Ethnographic Collection

*Curator: Pamela Mayne Correia*

Fossil Hominid Cast Collection

*Curator: Pamela Mayne Correia*

Osteology Collection

*Curator: Pamela Mayne Correia*

Zooarchaeology Reference Collection

*Curator: Robert Losey*

##### Department of History and Classics

W.G. Hardy Collection of Ancient Near Eastern and Classical Antiquities

*Curator: Jeremy Rossiter*

##### Department of Modern Languages and Cultural Studies

Bohdan Medwisky Ukrainian Folklore Archives

*Curator: Andriy Nahachewsky*

##### Department of Music

Canadian Centre for Ethnomusicology

*Curator: Regula Qureshi*

#### Faculty of Agricultural, Life and Environmental Sciences

##### Devonian Botanic Garden

Devonian Botanic Garden Herbarium

*Curator: René Belland*

##### Department of Human Ecology

Clothing and Textiles Collection

*Curator: Anne Bissonnette*

##### Department of Renewable Resources

Soil Science Monolith Collection

*Curator: Scott Chang*

Renewable Resources Natural History Collection

*Curator: John Acorn*

#### Faculty of Medicine

##### Department of Laboratory Medicine and Pathology

Pathology Gross Teaching Collection

*Curator: David Rayner*

## Faculty of Science

### Department of Biological Sciences

Cryptogamic Herbarium

*Curator: Catherine La Farge-England*

Vascular Plant Herbarium

*Curator: Jocelyn Hall*

Paleobotanical Collection

*Curator (Acting): Michael Caldwell*

E.H. Strickland Entomological Museum

*Curator: Felix Sperling*

Freshwater Invertebrate Collection

*Curator: Heather Proctor*

Jim van Es Marine Invertebrate and Malacology  
Collection

*Curator: Richard Palmer*

Museum of Zoology

*Curator: Cindy Paszkowski (Amphibian and Reptile  
Collection / Ornithology Collection)*

*Curator: Alison Murray (Ichthyology Collection)*

*Curator: Andrew Derocher (Mammalogy Collection)*

*Curator: Allen Shostak (Parasite Collection)*

Laboratory for Vertebrate Paleontology

*Curator: Philip Currie (Dinosaur Collection)*

*Curator: Alison Murray (Fossil Fishes Collection)*

*Curator: Michael Caldwell (Higher Vertebrates)*

### Department of Earth and Atmospheric Sciences

Drill Core Collection

*Curator: John-Paul Zonneveld*

Invertebrate Paleontology Collection

*Curator: Lindsey Leighton*

Meteorite Collection

*Curator: Christopher Herd*

Mineralogy and Petrology Collection

*Curator: Tom Chacko*

Trace Fossil Collection

*Curator: Murray Gingras*

### Museums and Collection Services

University of Alberta Art Collection

*Curator: Jim Corrigan*

Mactaggart Art Collection

*Curator: Lisa Claypool*

## Appendix C

### Museums and Collections Services Staff

Janine Andrews  
*Executive Director\**

Frannie Blondheim  
*Associate Director*

Helen Chimirri-Russell  
*Museums Policy Advisor*

Lisa Claypool  
*Curator, Mactaggart Art Collection*

Jim Corrigan  
*Curator, University of Alberta Art Collection*

Ellen Cunningham  
*Exhibition and Outreach Manager*

Chantelle De Martin  
*Administrative Coordinator\*\**

Danielle Gajewski  
*Collections Assistant*

Tom Hunter  
*Collections Assistant*

Jennifer Kuchta  
*Communications and Marketing Coordinator*

Denis La France  
*Senior Systems Administrator\*\**

Carmen Li  
*Preventive Conservation Manager*

Christina Marocco  
*Administrative Assistant\*\**

Erin McDonald  
*Collections Management Advisor*

Stephanie Nemcsok  
*Museum Education Coordinator*

Kyle Schmidt  
*Web Applications Developer*

Holly Sykora  
*Special Projects Assistant*

Jim Whittome  
*Information Management Advisor*

---

\* Responsible for Museums and Collections Services and the University of Alberta Archives

\*\* Administrative team shared with Museums and Collections Services and the University of Alberta Archives

## Appendix D

### Friends of the University of Alberta Museums Board of Directors: 2010-2011

Tom Kieren  
*President*

Dennis Brooks  
*Vice-President*

Julia Boberg  
*Past-President*

Halfdan (Bud) Baadsgaard  
*Secretary*

Diana Bacon  
*Treasurer*

Muriel Nelson  
*Newsletter Committee Chair*

Monica Barclay  
*Director-at-large*

Caitlin Wells  
*Director-at-large*

Tovah Yedlin  
*Director-at-large*

Tai Ziola  
*Director-at-large*

## Appendix E

### Detailed Funding Report

#### Section One

Museums and Collections Services coordinates applications for external funding to museum and heritage organizations and agencies on behalf of the University of Alberta Museums. The following funding was acquired for museum and collection projects between July 1, 2010 and June 30, 2011:

#### The Friends of the University of Alberta Museums (\$23,308)

Anthropology – Archaeology Collection (\$540)

*Purchase of Katanda Bone Point Casts*

Anthropology – Fossil Hominid Cast Collection (\$1300)

*Purchase of endocasts*

Biological Sciences – Vascular Plant Herbarium (\$3000)

*Hire student to establish standards for text and formatting and to edit and create species pages and database associated specimens (funds to match Young Canada Works grant).*

Biological Sciences – Laboratory for Vertebrate Paleontology (\$6500)

*Acquisition of casts for teaching collection and comparative research. Also to hire student to organize specimens, identify uncatalogued objects, and update location records.*

Devonian Botanic Garden – Herbarium (\$3000)

*Hire student to assist in curation and databasing of Rocky Mountain materials (funds to match Young Canada Works grant).*

Earth and Atmospheric Sciences – Meteorite Collection (\$6300)

*Acquisition of Springwater pallasite meteorites (funds intended to match Movable Cultural Property grant).*

Human Ecology – Clothing and Textiles Collection (\$2668)

*Purchase of mannequins for historical costumes.*

#### Community Outreach Endowment Fund (\$9371)

Anthropology – Archaeology Collection (\$2923)

*Digitization project related to Ami sub-collection of European stone and bone artifacts.*

Anthropology – Osteology Collection (\$375)

*Analysis of bacterial and fungal damage to skeleton collections.*

Biological Sciences – Museum of Zoology (\$3000)

*Hire student to maintain and upgrade the fish, amphibian, and reptile collections and continue inventory.*

Biological Sciences – E.H. Strickland Entomological Museum (\$3073)

*Hire student to prepare data for digitization.*

#### Young Canada Works (\$28,289)

##### Government of Canada

Biological Sciences – Museum of Zoology (\$5061)

*Hire student to maintain and upgrade the fish, amphibian, and reptile collections and continue inventory.*



Biological Sciences – Vascular Plant Herbarium (\$4627)

*Hire student to enhance web presence with species information relevant to larger user group by targeting beyond the scientific community to the general public.*

Devonian Botanic Garden – Herbarium (\$4795)

*Hire student to assist in curation (databasing, labelling, accessioning, packaging, and mounting) of herbarium materials.*

Museums and Collections Services – Dentistry Museum Collection (\$6903)

*Hire student to assist with assessment, inventory, and transfer of Dentistry Museum Collection.*

Museums and Collections Services – Museum Education Assistant (\$6903)

*Hire student to assist with research and development of museum educational materials.*

### **Alberta Museums Association (\$25,000)**

Museums and Collections Services – Museum Education Coordinator (\$25,000)

*Matching funds to continue employment of program lead for museum educational programs. (Non-base-funded program.)*

### **Alberta Foundation for the Arts (\$10,000)**

#### **Government of Alberta**

Museums and Collections Services – University of Alberta Art Collection (\$10,000)

*To support an oral history/exhibition project – Stories to Tell: Capturing the Collector's Legacy – from which to develop a standard practice and methodology for documenting collections.*

## **Section Two**

The following information provides details of research grants received by curators and staff responsible for individual museums and collections. This chart is generated centrally by the Research Services Office, and reflects grants with funds awarded during April 1, 2010 to March 31, 2011.

Name	Sponsors	Dept Description	Long Description	Begin Date	End Date	Funded Amt
Caldwell,Michael	NSERC	Earth & Atmospheric Sciences	Squamate phylogeny and evolution: fossil marine lizards, snakes, and basal terrestrial lizards	10-04-01	11-03-31	28900,000
Caldwell,Michael	UNIVERSITY OF ALBERTA	Biological Sciences	Other internally sponsored research -Research Allowance Caldwell	10-07-01	11-06-30	45000,000
Chocko,Thomas	NSERC	Earth & Atmospheric Sciences	Evolution of continental crust experimental and field based studies	10-04-01	11-03-31	39000,000
Chong,Scott	MULTI SPONSOR	RR Adm./General	Soil Nitrogen Indicators for Land Reclamation Policy Development for Forest Ecosystems in the Oklands Region of Alberta	10-04-01	11-03-31	4000,000
Chong,Scott	NSERC	RR Adm./General	Nitrogen cycling and tree nutrition in boreal forests: interactions with understory vegetation and soil water availability	10-04-01	11-03-31	22090,000
Currie,Philip	NSERC	Biological Sciences	Paleobiology (including anatomy, biomechanics, interrelationships, paleogeography, paleoecology) of theopod dinosaurs	10-04-01	11-03-31	57100,000
Derocher,Andrew	NSERC	Biological Sciences	Polar bears and climate change: habitat use and trophic interactions	10-04-01	11-03-31	10000,000
Derocher,Andrew	NSERC	Biological Sciences	Ecology of polar bears in a changing climate	10-04-01	11-03-31	24625,000
Derocher,Andrew	Government of Nunavut	Biological Sciences	Foxe Basin Polar Bear I/Q Project 2011-0-11	10-04-01	11-03-31	15000,000
Derocher,Andrew	Nunavut Wildlife Management Board	Biological Sciences	Ihut Qauimiqtuqungit of Polar Bear Distribution and Habitat in Foxe Basin	10-04-01	11-03-31	23000,000
Derocher,Andrew	World Wildlife Fund/Canada	Biological Sciences	Polar Bear Subpopulation Research and Movements Tracking in West Hudson Bay and Southern Beaufort Sea	10-11-08	11-04-30	40000,000
Derocher,Andrew	Environment Canada	Biological Sciences	Development of predictive models for future polar bear habitat and population trends	11-02-16	11-03-31	40000,000
Gingras,Murray	NSERC	Earth & Atmospheric Sciences	Expanding the potential of trace fossil analysis for practical applications	10-04-01	11-03-31	35000,000
Gingras,Murray	NSERC	Earth & Atmospheric Sciences	Ichnological advancements in process sedimentology and reservoir development	10-04-01	11-03-31	38000,000
Gingras,Murray	Queen's University	Earth & Atmospheric Sciences	Bars in Tidal Environments, Phase 2 (BITE2), Consortium Project	10-05-01	11-04-30	74250,000
Gingras,Murray	ConocoPhillips Canada	Earth & Atmospheric Sciences	Big Rivers Project	10-06-01	11-05-31	32000,000
Hall,Jocelyn	NSERC	Biological Sciences	Phylogenetics on morphological diversification in capparidaceae, cleomeceae, and brassicaceae	10-04-01	11-03-31	30660,000
Herd,Christopher	NSERC	Earth & Atmospheric Sciences	The geology of Mars from studies of martian meteorites	10-04-01	11-03-31	26000,000
Leighton,Lindsey	NSERC	Earth & Atmospheric Sciences	Assessing predation through time and space	10-04-01	11-03-31	22000,000
Losey,Robert	SSHRC	Anthropology	Animals Among the Dead: Faunal Remains in Mortuary Contexts, Cis-Baltica, Siberia	10-04-01	11-03-31	27220,000
Murray,Alison	NSERC	Biological Sciences	Systematics and biogeography of fossil and living teleost fishes	10-04-01	11-03-31	19000,000
Paszowski,Cynthia	AB Sport Recreation Parks Wildlife Fndn	Biological Sciences	Effects of trout stocking on zooplankton communities in small, boreal foothills lakes	10-04-01	11-03-31	5000,000
Paszowski,Cynthia	NSERC	Biological Sciences	The roles of habitat and interspecific interactions in the ecology of amphibians	10-04-01	11-03-31	34000,000
Paszowski,Cynthia	AB Sport Recreation Parks Wildlife Fndn	Biological Sciences	Identification of important habitat elements for leopard frogs	10-06-01	11-03-31	3000,000
Paszowski,Cynthia	AB Sport Recreation Parks Wildlife Fndn	Biological Sciences	Ecology of the wood frog in urban wetlands: patterns of habitat use, movement and colonization	11-01-01	11-12-31	1000,000
Paszowski,Cynthia	AB Sport Recreation Parks Wildlife Fndn	Biological Sciences	Does the presence of beavers increase biodiversity within wetlands in central Alberta	11-01-01	11-12-31	4000,000
Proctor,Heather	NSERC	Biological Sciences	Sexual selection in mites: copulation, conflict and complexity	10-04-01	11-03-31	23640,000
Speirling,Felix	NSERC	Biological Sciences	Speciation , phylogeny and diversity of insects	10-04-01	11-03-31	61070,000
Speirling,Felix	US Dept Ag Forest Service	Biological Sciences	Microsatellite Development for the Detection of Dispersing Adult Populations of the Spruce Budworm (Choristoneura fumiferana) in the Border Lakes Landscape.	10-09-10	11-09-30	20000,000
Willoughby,Pamela	SSHRC	Anthropology	The evolution of modern humans in southern Tanzania	10-04-01	11-03-31	34500,000
Zornaveid,John-Paul	NSERC	Earth & Atmospheric Sciences	Stratigraphic architecture & depositional evolution of the upper Triassic Charlie Lake formation.	10-04-01	11-03-31	53000,000



